

A man with a shaved head, wearing a dark blue polo shirt with a circular graphic and blue jeans, sits on a wooden workbench in a workshop. He is holding a roll of white blueprints. The workshop background is filled with tools, a fire extinguisher, and a sign that reads "THESE TOOLS ARE DANGEROUS, REQUIRED TO FIX ALL THE STUFF YOU GUYS FUCK UP LEAVE THEM ALONE". A large, stylized sign with a yellow and black hazard pattern on the left side is overlaid on the image, containing the text "DISASTER DIY".

DISASTER DIY

DISASTER DIY

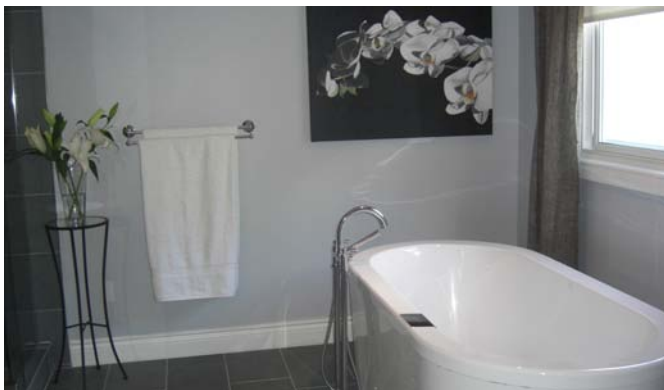
This hit series follows Do-It-Yourselfers who have failed at their home renovation project and who are in desperate need of some on the job training. That's when contractor Bryan Baeumler comes in to save the family from their reno nightmare.

In each episode, Bryan teaches DIY-ers how to fix their mistakes properly and safely with his humourous brand of tough love. With words of encouragement Bryan is able to transform the DIY-er from from handyman disaster to hero.

With compelling narratives from the DIY-er along with their family and friends, viewers will learn how to avoid dangerous shortcuts and how to troubleshoot their own home renovation.

26 x 30' Episodes

Target Audience: Adults 18-49



Produced by Si Entertainment.



DISTRIBUTION 360
A **marblemedia** COMPANY

74 FRASER AVENUE SUITE 100 TORONTO ON M6K 3E1 CANADA
+1 416 646 2711 DISTRIBUTION360.COM

KIRSTEN HURD
DIRECTOR, INTERNATIONAL SALES
AND AQUISITIONS
KIRSTEN@DISTRIBUTION360.COM